

PART NO. IN TUBE	CKT. SIZE	DM. B	DM. A
87340-04**	4	2.00	4.00
87340-06**	6	4.00	6.00
87340-08**	8	6.00	8.00
87340-10**	10	8.00	10.00
87340-12**	12	10.00	12.00
87340-14**	14	12.00	14.00
87340-16**	16	14.00	16.00
87340-18**	18	16.00	18.00
87340-20**	20	18.00	20.00

- NOTES:
- 12 CIRCUIT SIZE SHOWN FOR ILLUSTRATION ONLY. SEE CHART FOR AVAILABLE PART SIZES.
 - PLATING FINISH:
 3&8 - 0.76um/30uin MIN. GOLD IN CONTACT AREA
 1.90um/75uin MIN. TIN IN SOLDER TAIL AREA
 BOTH OVER 1.30um/50uin MIN. NICKEL OVERALL
 4&9 - 0.38um/15uin MIN. GOLD IN CONTACT AREA
 1.90um/75uin MIN. TIN IN SOLDER TAIL AREA
 BOTH OVER 1.30um/50uin MIN. NICKEL OVERALL
 - COPLANARITY OF SOLDER TAIL IS TO BE MEASURED BY RESTING THE PART ON A FLAT GAUGE SURFACE.
 - PRODUCT SPECIFICATION PS-87340 APPLIES.
 - THIS AREA OF PART TO BE HEAT STAKED TO RETAIN CONTACTS.
 - PART IS MATEABLE TO ALL MILLI-GRID HEADERS WITH MINIMUM PIN LENGTHS OF 1.90mm FOR TOP ENTRY.

PART NO. LEGEND

87340 - * * * *

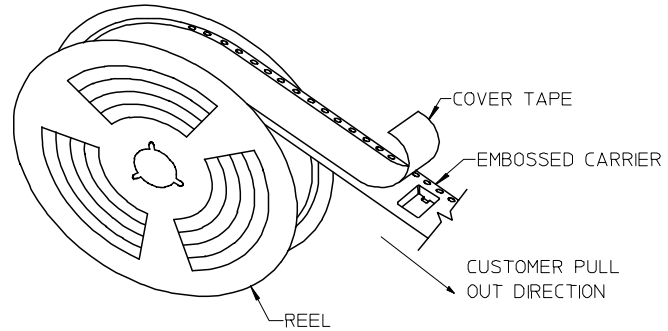
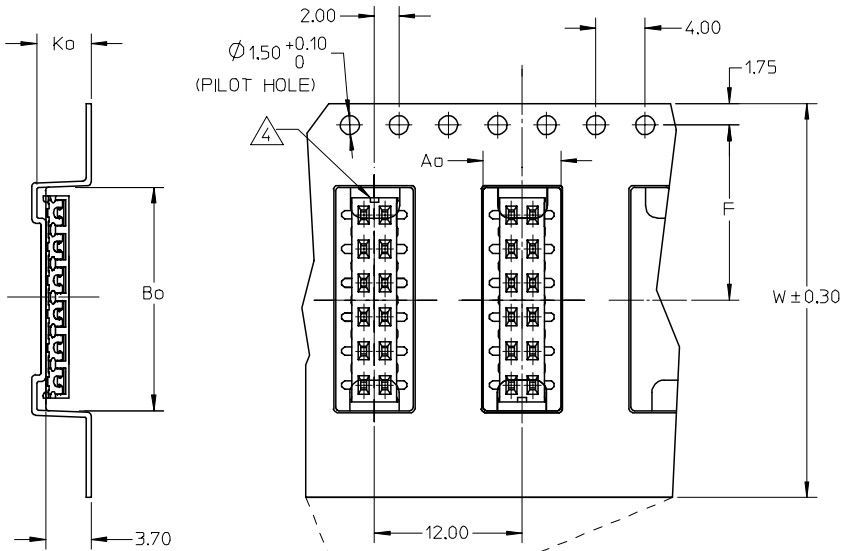
CIRCUIT SIZE [] PLATING []

1 - WITHOUT LOCATING PEGS (HOUSING - BLACK) 3 - (PACKED IN TUBE)
 2 - WITH LOCATING PEGS (HOUSING - BLACK) 4 - (PACKED IN TUBE)
 5 - WITHOUT LOCATING PEGS (HOUSING - NATURAL) 8 - (PACKED IN TAPE & REEL)
 6 - WITH LOCATING PEGS (HOUSING - NATURAL) 9 - (PACKED IN TAPE & REEL)

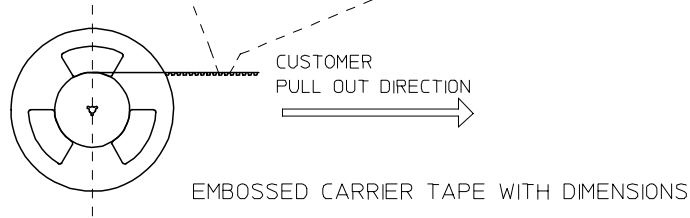
PDR#S-001668-00-00 EC NO: S2008-0262 2007/10/04 DRWNS:KANG CHKD:ATSEE 2007/10/05 APPR:MLONG 2007/10/08	QUALITY SYMBOLS ▽=0 ∇=0	GENERAL TOLERANCES (UNLESS SPECIFIED)	DIMENSION STYLE MM ONLY	SCALE NTS	DESIGN UNITS METRIC	THIRD ANGLE PROJECTION
		4 PLACES ± --- ± --- 3 PLACES ± --- ± --- 2 PLACES ± 0.20 ± --- 1 PLACE ± --- ± --- ANGULAR ± 3 °	DRAWN BY JKACHL I DATE 1991/07/02 CHECKED BY JNG DATE 1991/07/09 APPROVED BY YTYAP DATE 1991/07/09	TITLE MGRID VLPR II, 2MM DUAL ROW TOP ENTRY RECEPT., SMT	MOLEX INCORPORATED	
L1	REV	DRAFT WHERE APPLICABLE MUST REMAIN WITHIN DIMENSIONS	SEE TABLE	DOCUMENT NO. SD-87340-**-01		

10 9 8 7 6 5 4 3 2 1

PART NO. IN TUBE	PART NO. TAPE/REEL	CKT SIZE	Ao	Bo	F	W	Ko
87340-1014	87340-1019	10	6.70	10.40	11.50	24.00	5.30
87340-1613	87340-1618	16	6.60	16.30	11.50	24.00	4.40
87340-1424	87340-1429	14	6.60	14.40	11.50	24.00	4.40



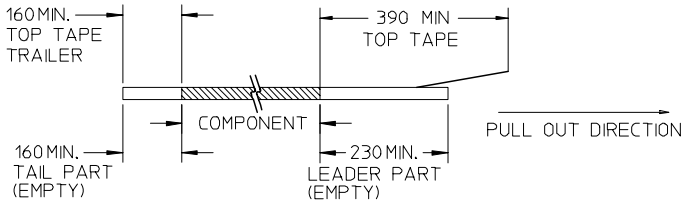
TAPE AND REEL ASSEMBLY SHOWN IS FOR ILLUSTRATION ONLY.



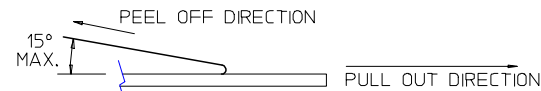
EMBOSSSED CARRIER TAPE WITH DIMENSIONS

NOTES:

1. LEADER AND TRAILER TAPE



2. PEELING OFF FORCE OF THE TOP TAPE: 20-80gf.
(PEELING DIRECTION AS SHOWN IN FOLLOWING FIGURE)



3. PACKAGING STANDARD IS AS PER EIA-481.

4. NO FIX ORIENTATION OF ASSEMBLY PART IN T&R.

5. TAPE & REEL QUANTITY : 1000 PCS / REEL

PDR#S-001668-00-00	2007/10/04
EC NO: S2008-0262	2007/10/05
DRWNS:KANG	CHKD:ATSEE
APPR:MLONG	

QUALITY SYMBOLS	DESCRIPTION
▽=0	
▽=0	
L1	REV

GENERAL TOLERANCES (UNLESS SPECIFIED)	
	mm INCH
4 PLACES	± --- ± ---
3 PLACES	± --- ± ---
2 PLACES	± 0.20 ± ---
1 PLACE	± --- ± ---
ANGULAR ± 3 °	
DRAFT WHERE APPLICABLE MUST REMAIN WITHIN DIMENSIONS	

DIMENSION STYLE		SCALE		DESIGN UNITS		THIRD ANGLE PROJECTION	
MM ONLY		NTS		METRIC		☉ □	
DRAWN BY	DATE	TITLE					
JKACHL I	1991/07/02	MGRID					
CHECKED BY	DATE	VLPR II, 2MM DUAL ROW					
JNG	1991/07/09	TOP ENTRY RECEPT., SMT					
APPROVED BY	DATE	MOLEX INCORPORATED					
YTYAP	1991/07/09						
MATERIAL NO.		DOCUMENT NO.	SHEET NO.				
SEE TABLE		SD-87340-**01	2 OF 2				

MOLEX INCORPORATED							
THIS DRAWING CONTAINS INFORMATION THAT IS PROPRIETARY TO MOLEX INCORPORATED AND SHOULD NOT BE USED WITHOUT WRITTEN PERMISSION							

9 8 7 6 5 4 3 2 1